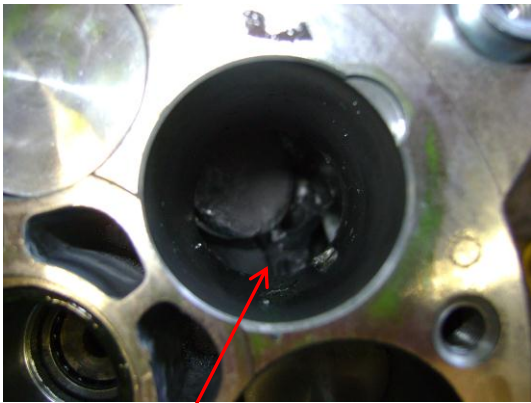


# Why Do Pattern Compressors Fail ?

Some customers will always require a cheaper option than the Original equipment part. This is why Auto Air Gloucester has introduced a range of pattern compressors (Aftermarket) which although the quality will not be the same as the O.E part, will fit and work well to service the customer requirements. Most of the pattern compressor failures are not because of poor quality, They fail because they are not fitted correctly.

**The one thing to remember with pattern compressors is that they are most often supplied with NO OIL, and will require oil adding to them before the compressor is fitted to the vehicle.**



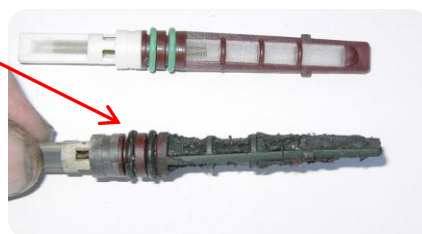
Metal particles in the Piston shaft, where the piston has broken down because no oil was added.

Orifice tube which has been totally blocked due to metal particles coming from the broken down compressor. The Orifice tube being blocked would stop the flow of refrigerant and oil to the new compressor when fitted and cause the same problem again.

If the compressor is fitted to the vehicle without oil being added, the results could be catastrophic and cause damage to the rest of the Air-con system. This is because when dry metal rubs against dry metal, the affects can be seen in the following pictures.



The wobble plate on this compressor was totally destroyed because no oil was added.



## Points to remember before fitting the Air-con compressor

1. When you buy a new Air-conditioning compressor you must always check How much oil is in it before you fit it.
2. Visually compare the old compressor to the new one before fitting it to ensure it is the same as the old one. Same amount of grooves on the pulley, same mounting points, same wiring plug (although on some patterns and re-man compressors the wiring plug will be a universal plug which you will to swap with the old one.
3. You must replace the receiver drier and expansion valve when you change the compressor, because if you do not and the old compressor had seized, Any metal debris in the system will filter its way into the new compressor and Wreck it.
4. If you are changing the compressor because the old one had seized, you will need to flush the Air-con system to clean it out and remove any debris that is in the system.
5. **When adding oil to the compressor, you MUST add oil directly to the compressor and not into the system via your charging Machine. By adding oil to the system with your charging station, you are just lubricating the system and not the compressor itself.**

The compressor featured in these photo,s was fitted to a car, With no oil added to it. The vehicle did 8 miles before the Compressor seized solid and stopped the car from being used.



**Don't let this happen to you !!!**